

Author: PA3AKE Primary, Secondary circuits

TITLE: RectifierBoard

Document Number:

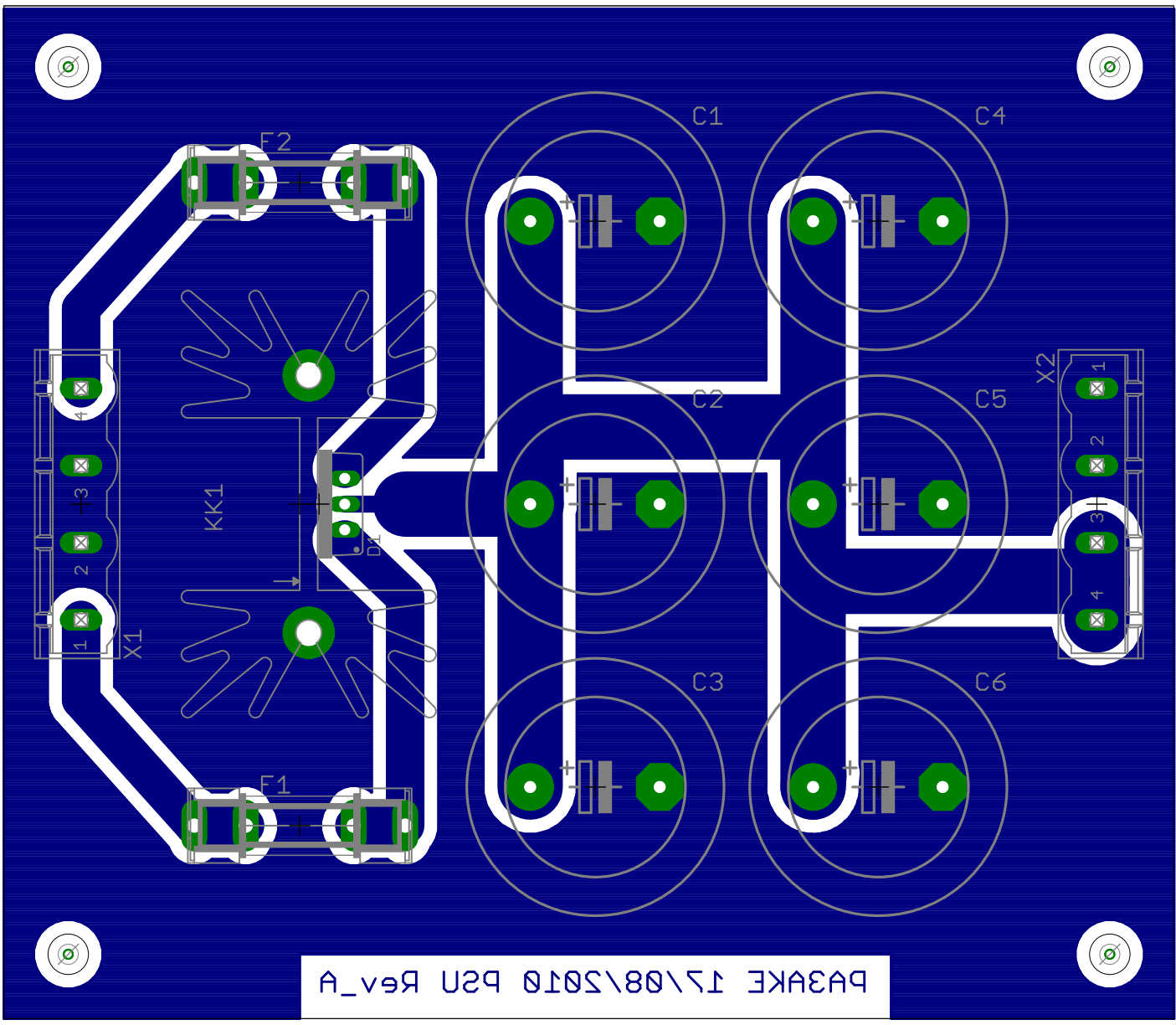
REV:  
A

Date: 5-3-2011 12:56:42

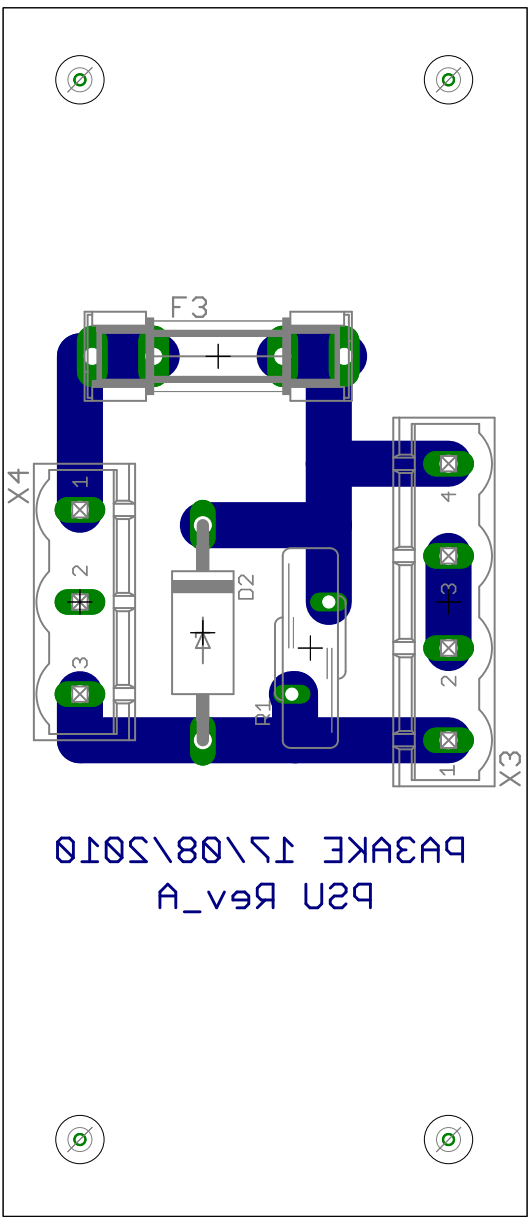
Sheet: 1/1

## Rectifier Board Rev-A Partlist

Part	Value	Package	Description
-Capacitors-----			
C1	10000u, 50V	50x25x12.5mm	Nichicon, Aluminum Electrolytic, UFW1H103MRD
C2	10000u, 50V	50x25x12.5mm	Nichicon, Aluminum Electrolytic, UFW1H103MRD
C3	10000u, 50V	50x25x12.5mm	Nichicon, Aluminum Electrolytic, UFW1H103MRD
C4	10000u, 50V	50x25x12.5mm	Nichicon, Aluminum Electrolytic, UFW1H103MRD
C5	10000u, 50V	50x25x12.5mm	Nichicon, Aluminum Electrolytic, UFW1H103MRD
C6	10000u, 50V	50x25x12.5mm	Nichicon, Aluminum Electrolytic, UFW1H103MRD
-Diodes-----			
D1	STPS50U100CT	TO220	STMicroElectronics, Schottky diode pair, 100V 50A
D2	1.5KE400CA	DO-201	Littelfuse, TVS diode, Bidirectional, 342V
R1	V250LA40AP	?	Littelfuse, MOV, 250Vac 130J Varistor.
-Fuses-----			
F1	250V 10A Slow	20x5mm	Generic 20x5mm fuse, 250Vac 10A, Slow
F2	250V 10A Slow	20x5mm	Generic 20x5mm fuse, 250Vac 10A, Slow
F3	250V 2A Slow	20x5mm	Generic 20x5mm fuse, 250Vac 2A, Slow
-Heat sinks-----			
KK1	Heatsink	SK129	Wakefield Heatsink TO220, 657-20ABP
KK1	Mica Isolation	TO220	Generic Mica isolation set for TO220 package
-Transformers-----			
T1	67027	110x52mm	Amplimo, Toroidal transformer, 225VA 2x115V 2x20V 5.62A
-Connectors-----			
F1	Fuseholder	20x5mm	Generic Fuseholder 20x5mm
F2	Fuseholder	20x5mm	Generic Fuseholder 20x5mm
F3	Fuseholder	20x5mm	Generic Fuseholder 20x5mm
X1	Secondary	ED365/4	On Shore Technology Inc., terminal block PCB, 4 position 7.5mm
X2	VDC-OUT	ED365/4	On Shore Technology Inc., terminal block PCB, 4 position 7.5mm
X3	Primary	ED365/4	On Shore Technology Inc., terminal block PCB, 4 position 7.5mm
X4	AC Mains 230V	ED365/3	On Shore Technology Inc., terminal block PCB, 3 position 7.5mm



P2U Rev\_A 17\08\2010 P2U Rev\_A



P2U Rev\_A 17\08\2010 P2U Rev\_A

