

Mother Board Rev-B Partlist

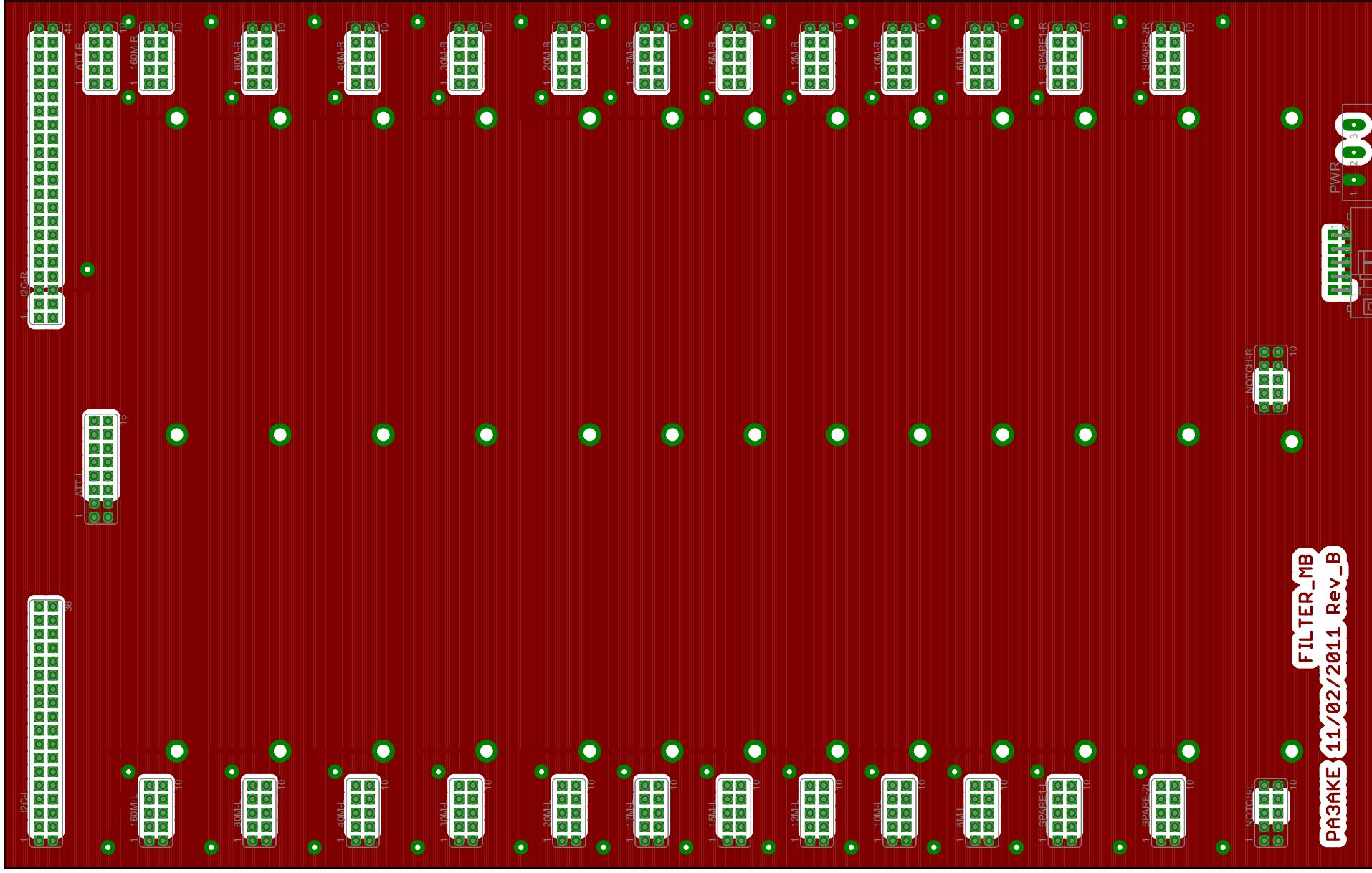
Part	Value	Package	Description

-Resistors-----			
R1	4K7	1206	(Generic Thick Film resistor)
R2	4K7	1206	(Generic Thick Film resistor)

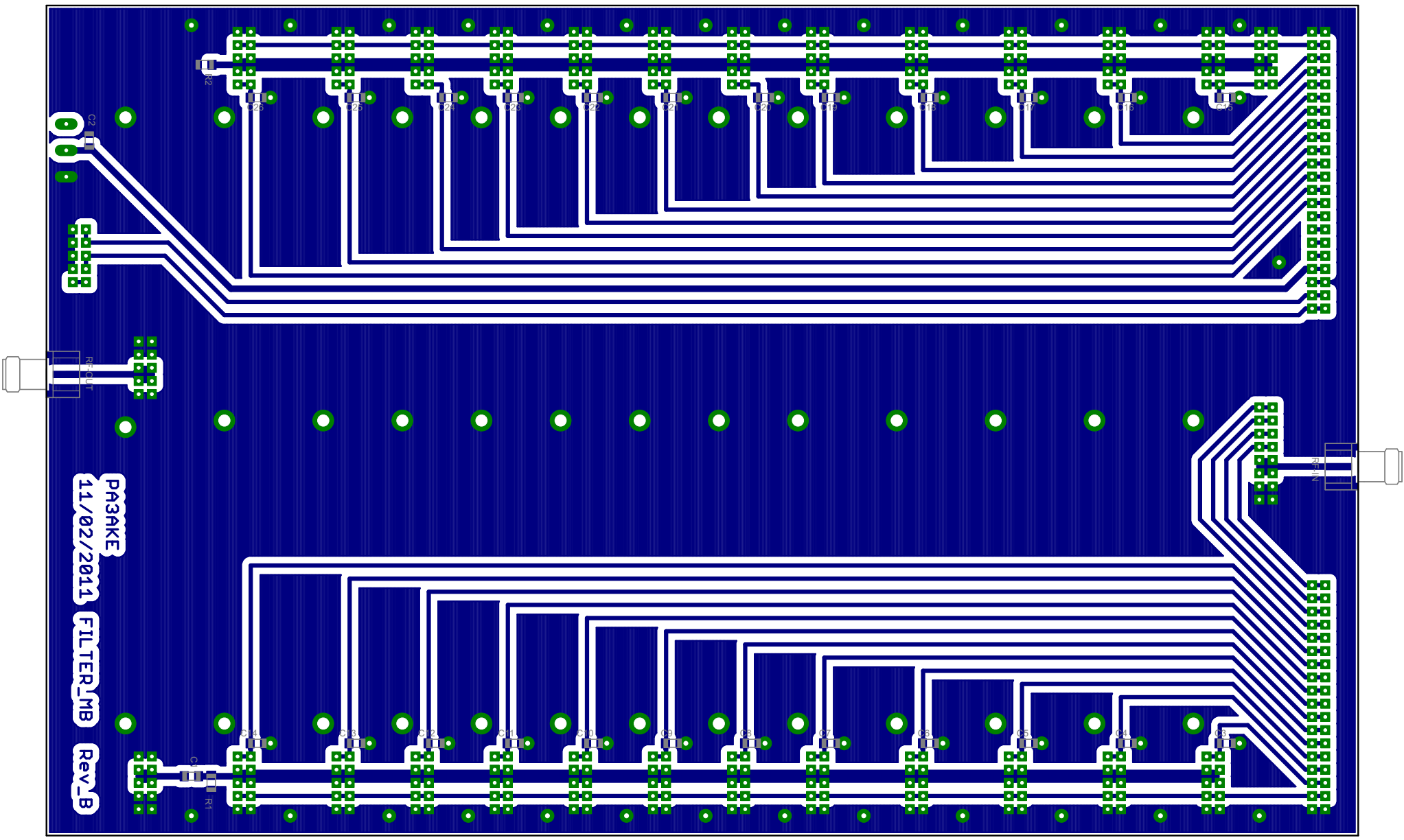
-Capacitors-----			
C1	100n	1206	(Generic X7R MLCC)
C2	100n	1206	(Generic X7R MLCC)
C3	100n	1206	(Generic X7R MLCC)
C4	100n	1206	(Generic X7R MLCC)
C5	100n	1206	(Generic X7R MLCC)
C6	100n	1206	(Generic X7R MLCC)
C7	100n	1206	(Generic X7R MLCC)
C8	100n	1206	(Generic X7R MLCC)
C9	100n	1206	(Generic X7R MLCC)
C10	100n	1206	(Generic X7R MLCC)
C11	100n	1206	(Generic X7R MLCC)
C12	100n	1206	(Generic X7R MLCC)
C13	100n	1206	(Generic X7R MLCC)
C14	100n	1206	(Generic X7R MLCC)
C15	100n	1206	(Generic X7R MLCC)
C16	100n	1206	(Generic X7R MLCC)
C17	100n	1206	(Generic X7R MLCC)
C18	100n	1206	(Generic X7R MLCC)
C19	100n	1206	(Generic X7R MLCC)
C20	100n	1206	(Generic X7R MLCC)
C21	100n	1206	(Generic X7R MLCC)
C22	100n	1206	(Generic X7R MLCC)
C23	100n	1206	(Generic X7R MLCC)
C24	100n	1206	(Generic X7R MLCC)
C25	100n	1206	(Generic X7R MLCC)
C26	100n	1206	(Generic X7R MLCC)

-Connectors-----			
6M-L	68683-305LF	2x05	(FCI, Dubox PCB connector 10pin)
6M-R	68683-305LF	2x05	(FCI, Dubox PCB connector 10pin)
10M-L	68683-305LF	2x05	(FCI, Dubox PCB connector 10pin)
10M-R	68683-305LF	2x05	(FCI, Dubox PCB connector 10pin)
12M-L	68683-305LF	2x05	(FCI, Dubox PCB connector 10pin)
12M-R	68683-305LF	2x05	(FCI, Dubox PCB connector 10pin)
15M-L	68683-305LF	2x05	(FCI, Dubox PCB connector 10pin)
15M-R	68683-305LF	2x05	(FCI, Dubox PCB connector 10pin)

17M-L	68683-305LF	2x05	(FCI, Dubox PCB connector 10pin)
17M-R	68683-305LF	2x05	(FCI, Dubox PCB connector 10pin)
20M-L	68683-305LF	2x05	(FCI, Dubox PCB connector 10pin)
20M-R	68683-305LF	2x05	(FCI, Dubox PCB connector 10pin)
30M-L	68683-305LF	2x05	(FCI, Dubox PCB connector 10pin)
30M-R	68683-305LF	2x05	(FCI, Dubox PCB connector 10pin)
40M-L	68683-305LF	2x05	(FCI, Dubox PCB connector 10pin)
40M-R	68683-305LF	2x05	(FCI, Dubox PCB connector 10pin)
80M-L	68683-305LF	2x05	(FCI, Dubox PCB connector 10pin)
80M-R	68683-305LF	2x05	(FCI, Dubox PCB connector 10pin)
160M-L	68683-305LF	2x05	(FCI, Dubox PCB connector 10pin)
160M-R	68683-305LF	2x05	(FCI, Dubox PCB connector 10pin)
ATT-L	68683-308LF	2x08	(FCI, Dubox PCB connector 16pin)
ATT-R	68683-305LF	2x05	(FCI, Dubox PCB connector 10pin)
I2C-L	68683-318LF	2x18	(FCI, Dubox PCB connector 36pin)
I2C-R	68683-322LF	2x22	(FCI, Dubox PCB connector 44pin)
NOTCH-L	68683-305LF	2x05	(FCI, Dubox PCB connector 10pin)
NOTCH-R	68683-305LF	2x05	(FCI, Dubox PCB connector 10pin)
SPARE-2L	68683-305LF	2x05	(FCI, Dubox PCB connector 10pin)
SPARE-2R	68683-305LF	2x05	(FCI, Dubox PCB connector 10pin)
SPARE1-L	68683-305LF	2x05	(FCI, Dubox PCB connector 10pin)
SPARE1-R	68683-305LF	2x05	(FCI, Dubox PCB connector 10pin)
RF-IN	SMA	Board Edge Mount	(Card edge SMA female connector)
RF-OUT	SMA	Board Edge Mount	(Card edge SMA female connector)
PWR	MSTBA	MSTBA 2.5/3-G-5.08	(conn header rt ang 3pos 5.08mm, PhoenixContact 1757255)
PWR	MSTBA	MSTB 2.5/3-ST-5.08	(conn term block plug 3pos 5.08mm, PhoenixContact 1757022)
I2C	I2C-HEADER	ML10L	(10 pin male flatcable connector)



FILTER_MB
PA3AKE 11/02/2011 Rev_B



PA3AKE
11/02/2011

FILTER_MB

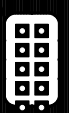
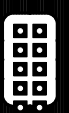
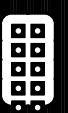
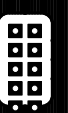
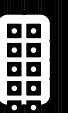
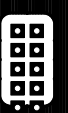
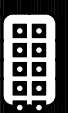
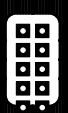
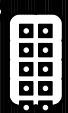
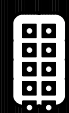
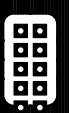
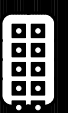
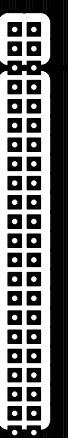
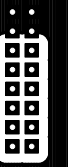
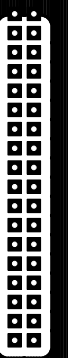
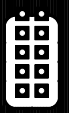
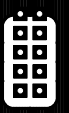
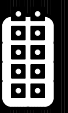
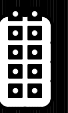
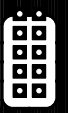
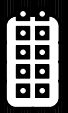
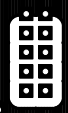
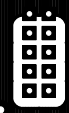
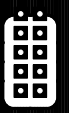
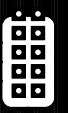
Rev_B

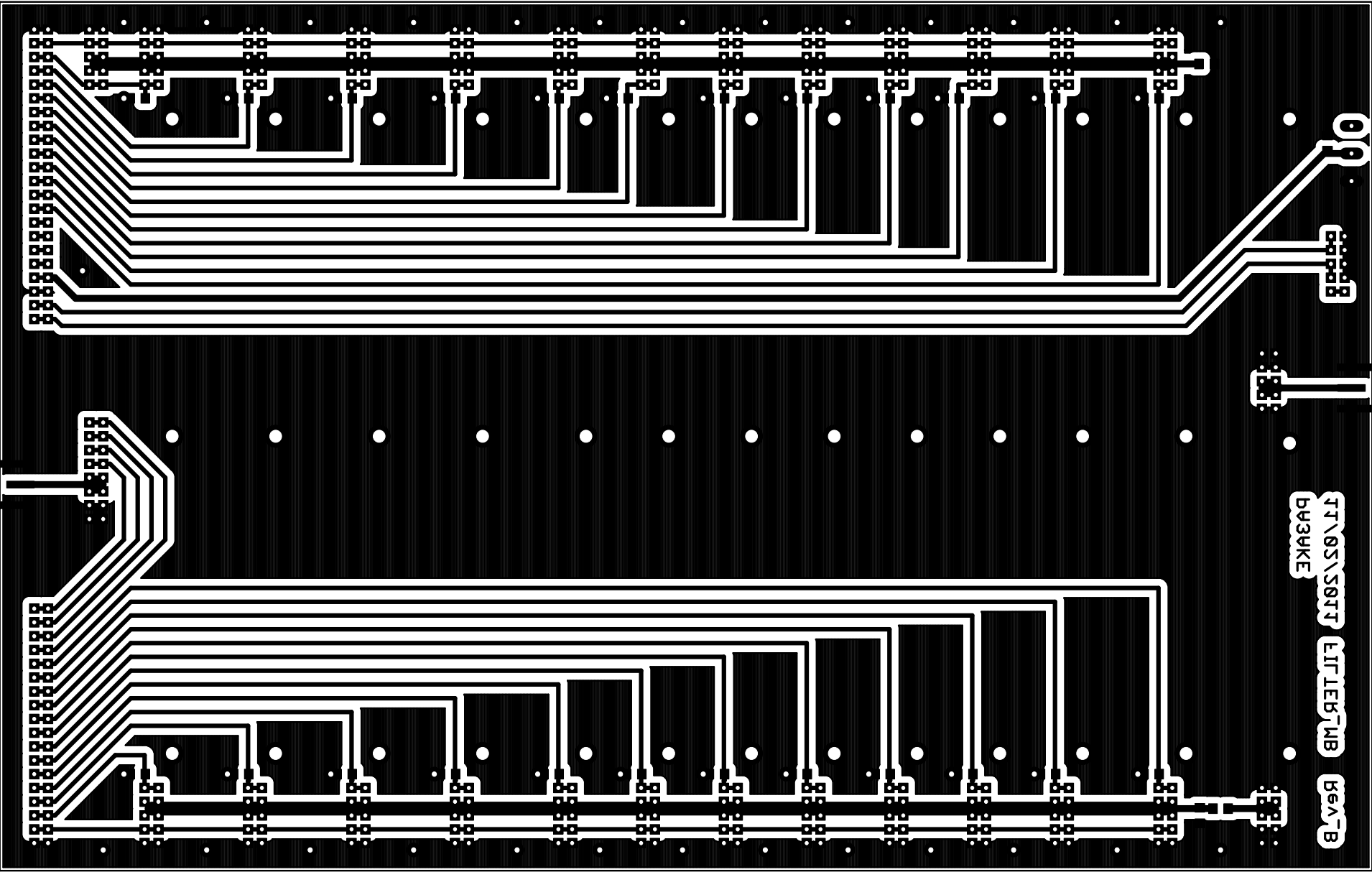
PA3WKE TT\OS\S01T Rev_B

FILTER_MB



00





TT\05\S01T

FILTER_MB

Ba3AKE

Res_B